

Lot 5  
Plan 22952 LTO

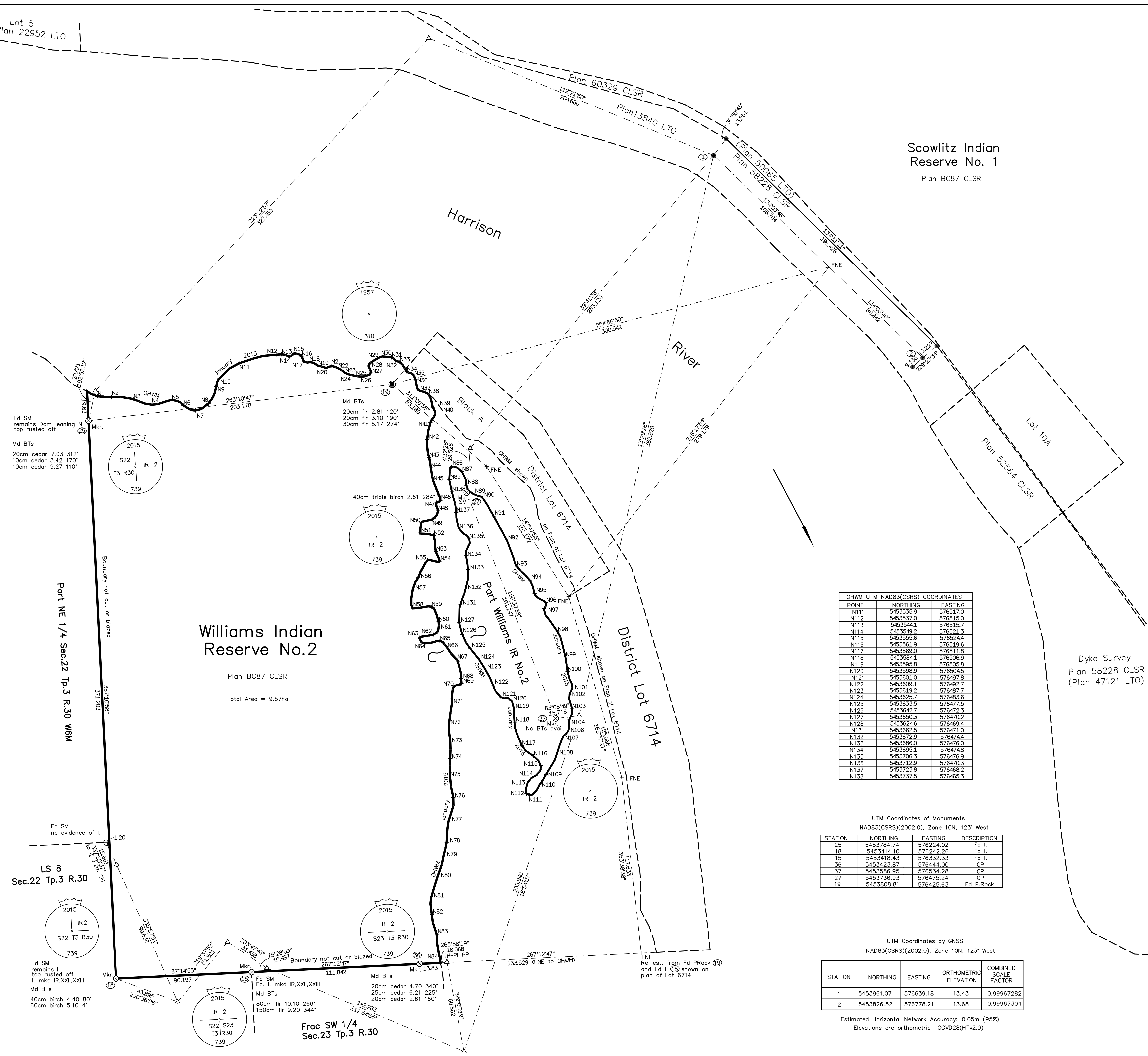
CANADA LANDS SURVEY RECORDS  
Date:

A copy of this plan is filed in the Land Title Office at New Westminster, British Columbia Under Plan Number:  
Date:

POINT	NORTHING	EASTING
N1	5453801.0	576229.9
N2	5453800.4	576239.2
N3	5453799.2	576253.8
N4	5453795.4	576266.1
N5	5453798.7	576279.3
N6	5453795.0	576287.0
N7	5453791.6	576295.1
N8	5453796.2	576303.7
N9	5453807.4	576308.8
N10	5453812.6	576310.7
N11	5453827.9	576324.0
N12	5453828.7	576349.0
N13	5453828.9	576352.2
N14	5453827.3	576357.4
N15	5453829.3	576360.4
N16	5453827.6	576365.5
N17	5453824.5	576366.8
N18	5453823.7	576371.2
N19	5453821.4	576376.5
N20	5453819.9	576384.7
N21	5453821.1	576389.2
N22	5453819.7	576389.6
N23	5453816.4	576394.5
N24	5453815.4	576397.4
N25	5453814.6	576400.3
N26	5453814.0	576405.2
N27	5453815.5	576411.4
N28	5453821.2	576410.0
N29	5453826.7	576417.0
N30	5453827.2	576422.4
N31	5453826.9	576427.2
N32	5453824.7	576428.0
N33	5453823.7	576430.6
N34	5453815.4	576433.4
N35	5453816.4	576437.5
N36	5453811.9	576441.3
N37	5453807.7	576444.9
N38	5453803.6	576447.7
N39	5453793.7	576452.6
N40	5453791.2	576454.0
N41	5453783.4	576461.1
N42	5453772.2	576460.3
N43	5453760.4	576450.3
N44	5453733.5	576451.4
N45	5453744.6	576453.0

POINT	NORTHING	EASTING
N46	5453731.9	576457.8
N47	5453730.8	576455.2
N48	5453725.0	576456.1
N49	5453719.2	576452.3
N50	5453717.0	576449.1
N51	5453710.2	576444.0
N52	5453708.5	576433.2
N53	5453697.8	576446.6
N54	5453691.4	576457.3
N55	5453692.1	576449.2
N56	5453690.6	576443.0
N57	5453672.8	576439.4
N58	5453660.1	576439.5
N59	5453661.2	576431.7
N60	5453651.5	576456.5
N61	5453646.3	576456.4
N62	5453642.7	576453.1
N63	5453641.0	576444.1
N64	5453636.8	576447.6
N65	5453638.4	576457.3
N66	5453633.8	576462.3
N67	5453625.8	576468.8
N68	5453613.6	576471.6
N69	5453610.3	576471.8
N70	5453608.5	576466.7
N71	5453597.1	576465.3
N72	5453583.3	576463.3
N73	5453571.2	576464.3
N74	5453560.4	576464.2
N75	5453548.2	576464.1
N76	5453534.4	576466.3
N77	5453518.7	576463.1
N78	5453504.7	576461.8
N79	5453495.4	576459.8
N80	5453481.6	576455.8
N81	5453467.6	576451.5
N82	5453456.7	576452.0
N83	5453443.6	576455.2
N84	5453427.6	576457.4

POINT	NORTHING	EASTING
N85	5453745.6	576463.8
N86	5453754.0	576465.0
N87	5453751.1	576472.0
N88	5453741.5	576475.0
N89	5453735.8	576480.1
N90	5453734.3	576484.6
N91	5453721.3	576491.1
N92	5453704.8	576502.1
N93	5453698.1	576508.4
N94	5453678.8	576517.2
N95	5453669.8	576520.3
N96	5453664.0	576527.8
N97	5453660.1	576536.7
N98	5453644.6	576535.5
N99	5453627.7	576540.7
N100	5453618.1	576542.1
N101	5453607.1	576546.3
N102	5453602.6	576543.4
N103	5453593.4	576546.1
N104	5453586.0	576543.3
N105	5453581.2	576543.4
N106	5453580.6	576543.0
N107	5453572.6	576538.2
N108	5453564.6	576535.4
N109	5453549.7	576527.8
N110	5453542.9	576523.6



Scowlitz Indian Reserve No. 1  
Plan BC87 CLSR

# PLAN AND FIELD NOTES OF SURVEY OF THE EXTERIOR BOUNDARIES OF WILLIAMS INDIAN RESERVE NO. 2

NEW WESTMINSTER DISTRICT  
BRITISH COLUMBIA

BCGS 92H021  
Scale 1:1250



The plot size that will provide true scale and optimum readability for this plan is 600mm by 1000mm

This survey was executed during the period of January 13 to January 16, 2015 by Brian D Sansom, CLS, BCLS

This plan lies within the Fraser Valley Regional District

### Legend

Bearings are UTM grid derived from GNSS observations and the fixed coordinates of Fd IP 1 and Fd IP 2 and are referred to the central meridian, Zone 10, (123° West) NAD83(CSRS) 2002.0

This plan shows horizontal ground level distances in metres. To compute grid distances, multiply ground level distances by the combined scale factor of 0.99967282. To obtain local astronomic bearings referred to the central meridian through Fd IP 1, apply the convergence angle of +00'47.5"

The UTM coordinates and estimated network horizontal accuracy are derived from dual frequency differential carrier phase GNSS observations post processed using the Natural Resources Canada Precision Point Positioning (PPP) service and the HTv2.0 geoid model.

The estimated network accuracy is 0.05m at 95% confidence level.

Bearings to bearing trees are grid. Distances to bearing trees are horizontal.

- BCLS Type 5 iron post found.....
- BCLS Type 4 capped post placed.....
- BCLS Type 2 rock post found.....
- Traverse Station.....
- Traverse line.....
- Reserve Boundary dealt with by this plan.....

All monuments placed are marked with commission number 739 issued by the Association of British Columbia Land Surveyors.

Metal Reference markers 1.2m in height are placed adjacent to monuments.

Support information for this survey is contained in a survey report recorded under Field Book number FB..... CLSR.

POINT	NORTHING	EASTING
N111	5453535.9	576517.0
N112	5453537.0	576515.0
N113	5453544.1	576513.7
N114	5453549.2	576521.3
N115	5453555.6	576524.4
N116	5453561.9	576519.6
N117	5453569.0	576511.9
N118	5453584.1	576506.9
N119	5453595.8	576505.8
N120	5453598.9	576504.5
N121	5453601.0	576497.8
N122	5453609.1	576492.7
N123	5453619.2	576497.7
N124	5453625.7	576493.6
N125	5453633.5	576477.5
N126	5453642.7	576472.3
N127	5453650.3	576470.2
N128	5453624.6	576469.4
N129	5453622.5	576471.0
N130	5453629.9	576474.4
N131	5453686.0	576476.0
N132	5453706.3	576474.8
N133	5453706.3	576474.8
N134	5453712.9	576470.3
N135	5453723.8	576468.2
N136	5453737.5	576465.3

STATION	NORTHING	EASTING	DESCRIPTION
25	5453784.74	576224.02	Fd I.
18	5453414.10	576242.26	Fd I.
19	5453418.43	576332.33	Fd I.
36	5453423.87	576444.00	CP
37	5453586.95	576534.28	CP
27	5453736.93	576475.24	CP
19	5453808.81	576425.63	Fd P.Rock

STATION	NORTHING	EASTING	ORTHOMETRIC ELEVATION	COMBINED SCALE FACTOR
1	5453961.07	576639.18	13.43	0.99967282
2	5453826.52	576778.21	13.68	0.99967304

Estimated Horizontal Network Accuracy: 0.05m (95%)  
Elevations are orthometric CGVD28(HTv2.0)

Re: Section 38, Canada Lands Surveyors Regulations  
CERTIFIED CORRECT  
On the 16th day of January, 2015  
Brian D Sansom, CLS, BCLS



Department of Natural Resources  
Re: Section 29, Canada Lands Surveys Act  
CONFIRMED  
Andrew C. Brebner, CLS  
Manager, Cadastral Services West & North  
Surveyor General Branch

Department of Indian Affairs and Northern Development  
Re: Section 29, Canada Lands Surveys Act  
THIS PLAN IS SATISFACTORY  
Regional Manager  
Lands Operations, British Columbia  
on behalf of the Minister

Project No. 2014 10 167  
File No. SM8210-08045  
Checklist No. 2774